

Experiment With Moon Phases

Supplies:

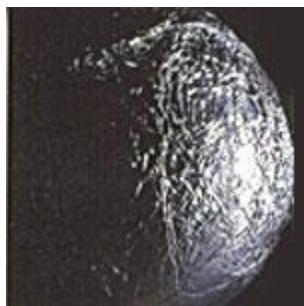
- Styrofoam Ball
- Pencil
- Flashlight
- Aluminum Foil
- Black Construction paper
- Dark Room

Directions:

1. Stick the pencil into the Styrofoam ball.
2. Wrap up the ball in the tinfoil. Try to make sure that the wrapping is smooth as possible.
3. Then turn on flashlight. And turn off main light to make room dark.
4. Then one partner holds the flashlight while the other partner is turning their body with the moon. The person's head is the (Earth), Styrofoam ball (Moon) flashlight (Sun).

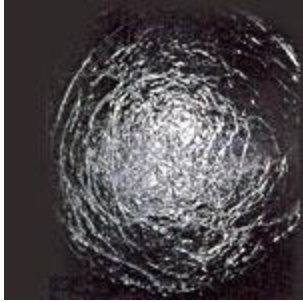
Or

Place a piece of black paper on the table. Then place the moon on the black paper. Next shine the flashlight onto the moon (Styrofoam ball). Gradually move around the table, keeping your eyes steadily on the Moon, which is lit up one side by the flashlight. You will see the different shapes it takes. These shapes are the Moon's phases.



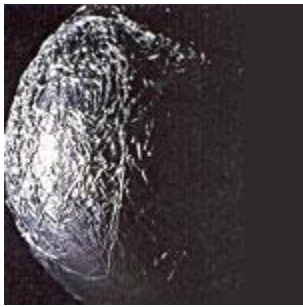
1st Quarter Phase

As you continue moving around, the ball gradually fades into darkness.



Full Moon

To show the **full moon** shine the sun (flashlight) directly onto your moon. (The Sun and Earth are about the same position here. Which is why we see the full moon reflecting the Sun's light.



Last Quarter Moon



Crescent Moon

When you are opposite your friend in the project, the side of the ball facing you is dark. We can only see a thin sliver of light, which we call a **new or crescent Moon**.

Information:

The **darker regions** on the surface are great, dusty plains called seas, or maria.

The **lighter areas** are highlands. These are pitted with craters that are sometimes hundreds of miles across.

Read more at http://www.kidsgen.com/school_